

---

## BarCode Scanner Setup

The handheld may also have the capability of scanning BarCodes to ease the driver input of products sold to customer, loading the truck, etc.

The following instructions will assist you with setting up the handheld to have the ability to scan BarCodes.

### Launching BarCode Scanning Software

The handheld has a software package that is required to run in order for the barcode scanner to work with any 3<sup>rd</sup> party applications (such as Route Manager). You can easily see if this software is running by the BarCode icon in the lower right corner of the Today screen:

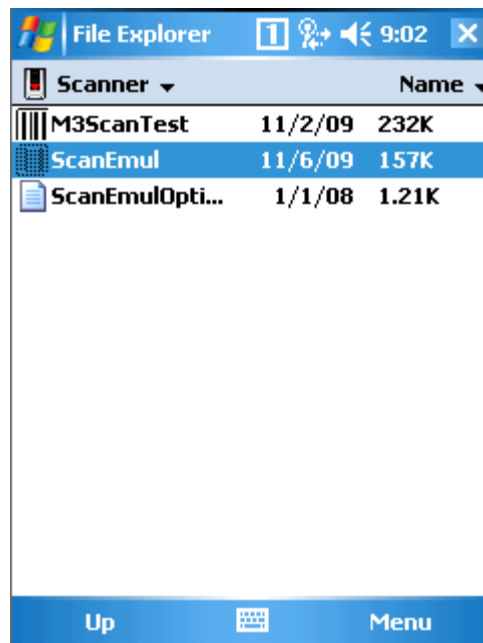


If this icon does not appear, you can launch the software by following the following procedure:

1. Go to Start > Programs, and then locate the File Explorer option:



2. Next, navigate your way to the My Device > Flash Disk > Scanner folder and select the ScanEmul program:



3. This will then Initialize the Scanner, so it's ready for use for 3<sup>rd</sup> Part applications.

Note: This procedure must be done anytime you perform a hard reset on the handheld.

## BarCode Scanner Configuration

After starting the program, or confirming its running, we will need to verify the Scanner is set to be used as a “Keyboard Wedge” style scanner. This is checked by:

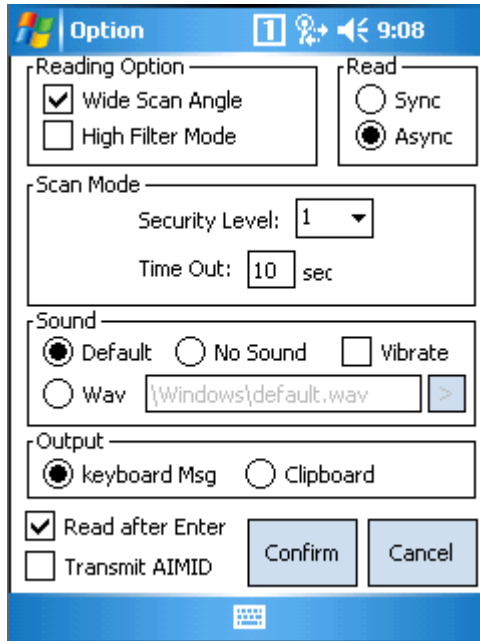
1. Click on the BarCode program icon on the lower right of the Today Screen:



2. Choose the “Option” choice from the menu that appears:



3. Locate the “Output” section, about  $\frac{3}{4}$  the way down the screen and make sure the radio button is selected to use “Keyboard Msg” and NOT “Clipboard”:



4. Select the “Confirm” button to save changes.

## Testing the Scanner

After confirming the BarCode scanner software is running, and the Output mode is on Keyboard Msg, we can do a quick test to confirm the scanner is functioning:

1. Click on the BarCode program icon on the lower right of the Today Screen:



2. Choose the “Result Window” from the menu that appears:



3. This will then launch a small window on your screen:



4. Now, Scan something with a BarCode to see the results (use the button on the right side of the handheld with the "S" on it):